

Dedicated CT Electronic Kwh Meter

SPECIFICATIONS

- Standards: IEC61036, CNS14607
- Accuracy class: 2.0
- Max error: 2%
- Display: 6 digits drum, 0.1 kWh resolution
- Starting current: 0.4% of test current
- Rubber gasket between cover and body
- SMT design and construction
- Surge test: 6 kV 1.2/50 usec IEC61000-4-5
- Seals to preventing illegal abstraction and fraud
- Temperature: -10 to 60°C

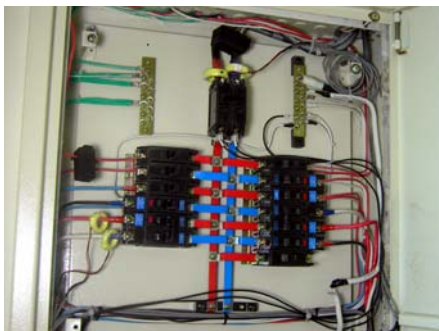
FEATURES

- Accuracy higher than classic mechanical meter
- Lower starting current, prevents tariff loss
- Saves on electric panel cost and space
- Pleasing appearance
- Easy to install

APPLICATIONS

- Tenant offices or residential buildings
- Apartments
- College dormitories
- Shopping malls
- Wet markets
- Food concessions
- Marinas
- Mobile Home Parks
- Exhibition booths

CT Connection for Existing Panels



With Donut Type CT



TK102MA
Single Phase Two Wire



DEM560MA
Single Phase Three Wire



DEM600MA
Three Phase Four Wire

With Split Type CT



TK102MS
Single Phase Two Wire



DEM560MS
Single Phase Three Wire



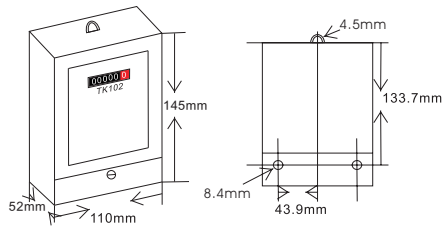
DEM600MS
Three Phase Four Wire

For Dedicated Donut CT - Ordering Information (CTs included)

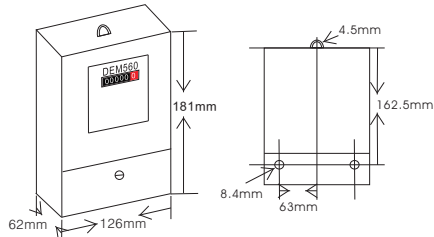
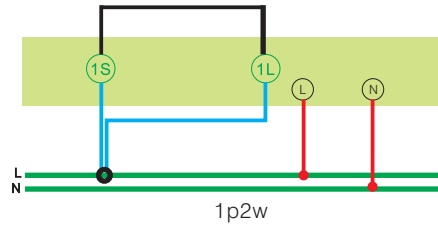
Type	Ordering Code	Voltage	Current
1p2w	TK102MA-50A	90-260V	50 A
1p3w	DEM560MA-3/3-100A	90-240V	100 A
3p3w	DEM560MA-3/3-100A	90-240V	100 A
3p4w	DEM600MA-3/4-100A	120/208V 220/380V	100 A

For Dedicated Split CT - Ordering Information (CTs included)

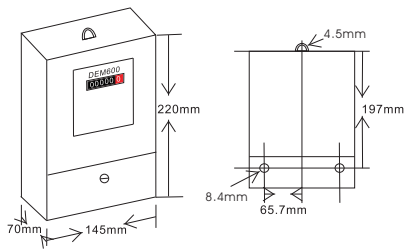
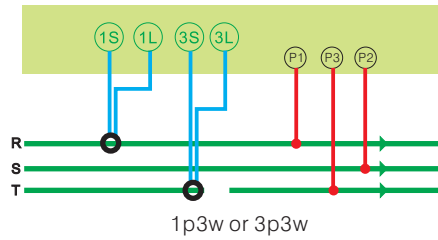
Type	Ordering Code	Voltage	Current
1p2w	TK102MS-50A	90-260V	50A
1p3w	DEM560MS-3/3-100A	90-240V	100A
1p3w	DEM560MS-3/3-200A	90-240V	200A
3p3w	DEM560MS-3/3-100A	90-240V	100A
3p3w	DEM560MS-3/3-200A	90-240V	200A
3p4w	DEM600MS-3/4-100A	120/208V 220/380V	100A
3p4w	DEM600MS-3/4-200A	120/208V 220/380V	200A



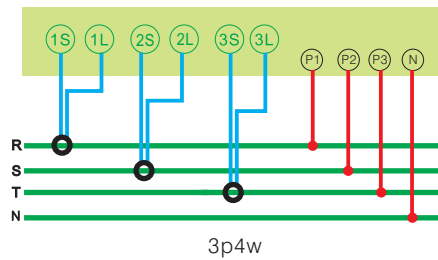
TK102MA/TK102MS
1p2w
Weight: 0.5 kg



DEM560MA/DEM560MS
3p3w or 1p3w
Weight: 1 kg



DEM600MA/DEM600MS
3p4w, Weight: 1.78 kg

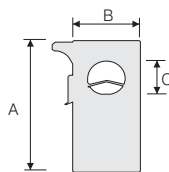


Split Type CTs

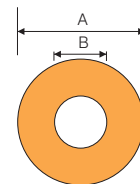
Split Core

CT Type	Dimensions (mm)
CT-50S	A=48 B=26 C=10
CT-100S	A=54 B=30 C=16
CT-200S	A=76 B=45 C=24

★ starting current : 0.1A



Donut Type CTs



Donut CT	Dimensions (mm)
CT-100D	A=44 B=27.5
CT-200D	A=51 B=31